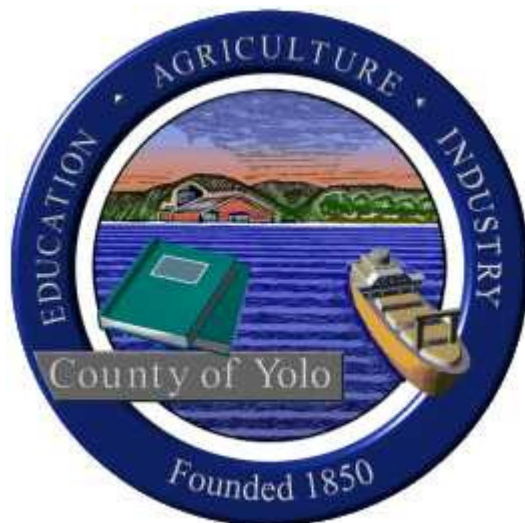


GOOD HOUSEKEEPING PRACTICES PART OF THE



COUNTY OF YOLO Improvement Standards

Updated

November 18, 2009

SECTION 11

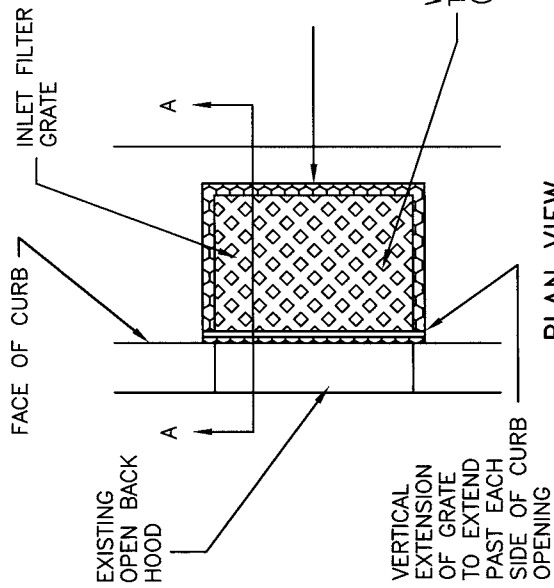
STORMWATER QUALITY, EROSION AND SEDIMENT CONTROL

CONTENTS	Page
11-1 ABBREVIATIONS / ACRONYMS	11-1
11-2 GOOD HOUSEKEEPING PRACTICES	11-1
11-2.1 ALL CONSTRUCTION SITES REGARDLESS OF SIZE	11-1
11-2.2 CONSTRUCTION PROJECTS INVOLVING PAINT WORK.....	11-2
11-2.3 CONSTRUCTION PROJECTS INVOLVING CEMENT AND CONCRETE WORK.....	11-3
11-2.4 CONSTRUCTION PROJECTS INVOLVING ROADWORK/PAVEMENT CONSTRUCTION	11-3

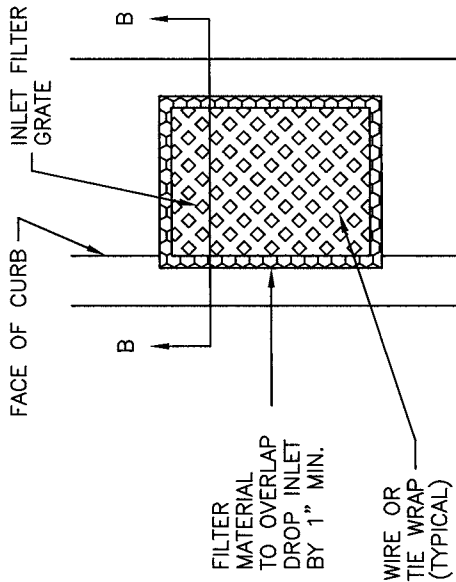
Standard Drawings		
Section 11 – Stormwater Quality, Erosion and Sediment Control		
11-7	1 of 3	Storm Drain Inlet Filter
11-7	2 of 3	Storm Drain Inlet Filter Bag
11-7	3 of 3	Inlet Sediment Control
11-8	1	Fiber Rolls
11-9	1	Concrete Washout
11-1	1	Stabilized Construction Site Access

PLACEMENT AT TYPE B AND E DROP INLETS

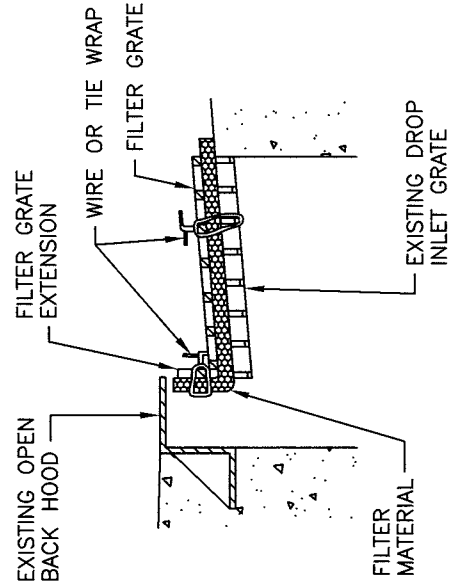
PLACEMENT AT TYPE A, C, D AND F DROP INLETS AND PARKING LOTS



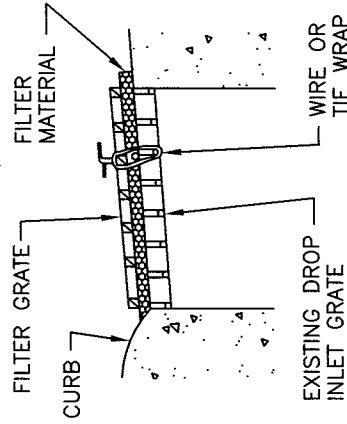
PLAN VIEW



PLAN VIEW



SECTION A-A



SECTION B-B

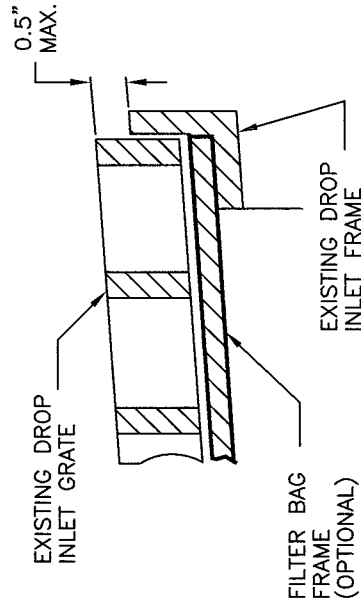
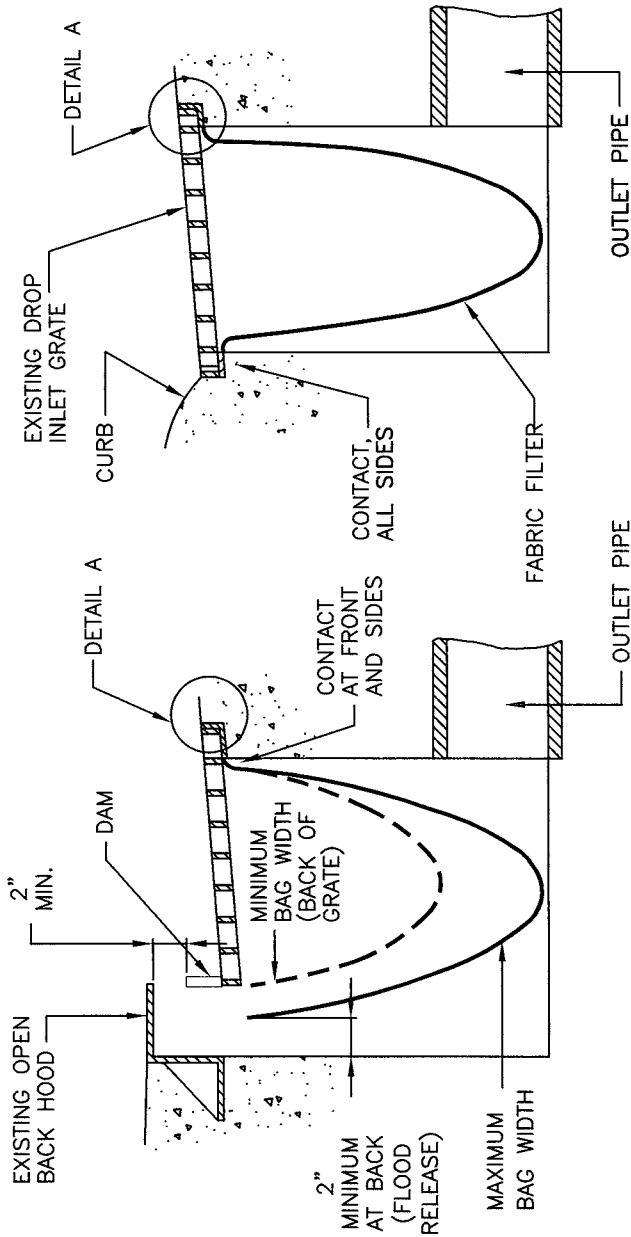
NOTES:

1. THE MAXIMUM DRAINAGE AREA PER FILTER SHALL BE NO MORE THAN 2 ACRES.
2. THE FILTER PAD SHALL BE 1" THICK CLEANABLE POLYESTER FIBER AND ACRYLIC LATEX RESIN OR APPROVED EQUIVALENT. THE FILTER PAD SHALL OVERLAP DROP INLET ON ALL SIDES BY A MINIMUM OF 1".
3. THE FILTER GRATE SHALL BE MADE OF EXPANDED METAL OR REBAR AND BE OF SUFFICIENT STRENGTH TO PREVENT BENDING WHEN DRIVEN OVER. GRATE MATERIAL SHALL NOT EXCEED 0.5" THICK. THE GRATE SHALL HAVE A MINIMUM 60% OPEN AREA. GRATES USED AT TYPE B AND E INLETS SHALL HAVE A VERTICAL EXTENSION TO COVER THE CURB OPENING. THE FILTER GRATE SHALL BE THE SAME SIZE AS THE DROP INLET GRATE.
4. THE FILTER PAD AND GRATE SHALL BE SECURELY ATTACHED TO THE DROP INLET BY WIRE OR TIE-WRAPPS.
5. INLET FILTERS SHALL BE INSPECTED WEEKLY, BEFORE AND AFTER EACH RAINFALL EVENT. REPAIRS SHALL BE MADE AS NEEDED. SEDIMENT AND DEBRIS SHALL BE REMOVED AND DISPOSED OF PROPERLY.

COUNTY OF YOLO PLANNING AND PUBLIC WORKS DEPARTMENT	DATE: 08/05/08
STORM DRAIN INLET FILTER	SHEET # 1 OF 3
COUNTY ENGINEER No. C42401 <i>James Hollas</i>	DRAWING #: 11-7 APPROVAL DATE: 28 AUG. 08 NOT TO SCALE

PLACEMENT AT TYPE B AND E DROP INLETS

PLACEMENT AT TYPE A, C, D AND F DROP INLETS AND PARKING LOTS



DETAIL A

NOTES:

1. THE MAXIMUM DRAINAGE AREA PER FILTER SHALL BE NO MORE THAN 2 ACRES.
2. THE FILTER BAG SHALL BE MANUFACTURED FROM UV RESISTANT POLYPROPYLENE, NYLON, POLYESTER, OR ETHYLENE FABRIC WITH A MINIMUM TENSILE STRENGTH OF 50 LBS PER LINEAL FOOT, AN EQUIVALENT OPENING SIZE NOT GREATER THAN A 20 SIEVE AND WITH A MINIMUM FLOW RATE OF 40 GALLONS / MINUTE / SQ FT.
3. THE FILTER BAG MAY BE SUSPENDED FROM OR HELD IN PLACE BY THE EXISTING INLET GRATE (OR OTHER APPROVED METHOD), PROVIDING NO MODIFICATION OR DAMAGE SHALL BE DONE TO THE INLET GRATE OR FRAME. THE INLET GRATE SHALL NOT BE CAUSED TO REST MORE THAN 0.5" ABOVE THE INLET FRAME (SEE DETAIL A).
4. THE FILTER BAG MAY EXTEND TO THE BOTTOM OF THE INLET BOX PROVIDED THE OUTLET PIPE IS UNOBSTRUCTED.
5. FLOWS SHALL NOT BE ALLOWED TO BYPASS THE BAG. THE BAG OR ITS FRAME SHALL CATCH FLOWS AT ALL SIDES OF THE INLET, EXCEPT AS SHOWN FOR FLOOD RELEASE.
6. INLET FILTER BAGS SHALL BE INSPECTED WEEKLY AND AFTER EACH RAINFALL DURING THE WET SEASON AND MONTHLY DURING THE DRY SEASON. SEDIMENT AND DEBRIS SHALL BE REMOVED BEFORE ACCUMULATIONS HAVE REACHED ONE THIRD THE DEPTH OF THE BAG. BAGS SHALL BE REPAIRED OR REPLACED AS SOON AS DAMAGE OCCURS.
7. AN APPROVED ALTERNATIVE ARE THE "GRATE MATES". THESE ARE PROVIDED WITH SLOTS THAT POLES CAN BE INSERTED FOR LIFTING OUT THE FILTER BAGS.

COUNTY OF YOLO PLANNING AND PUBLIC WORKS DEPARTMENT	DATE: 08/05/08
STORM DRAIN INLET FILTER BAG	SHEET # 2 OF 3
<i>James Kallas</i> COUNTY ENGINEER No. C42401	DRAWING #: 11-7 NOT TO SCALE
APPROVAL DATE <i>28 AUG 08</i>	

GRAVEL BAG(S) OR OTHER ACCEPTED SEDIMENT CONTROL BMPs. PLACE BAGS TIGHT AGAINST FACE OF CURB.

BACK OF CURB

FACE OF CURB

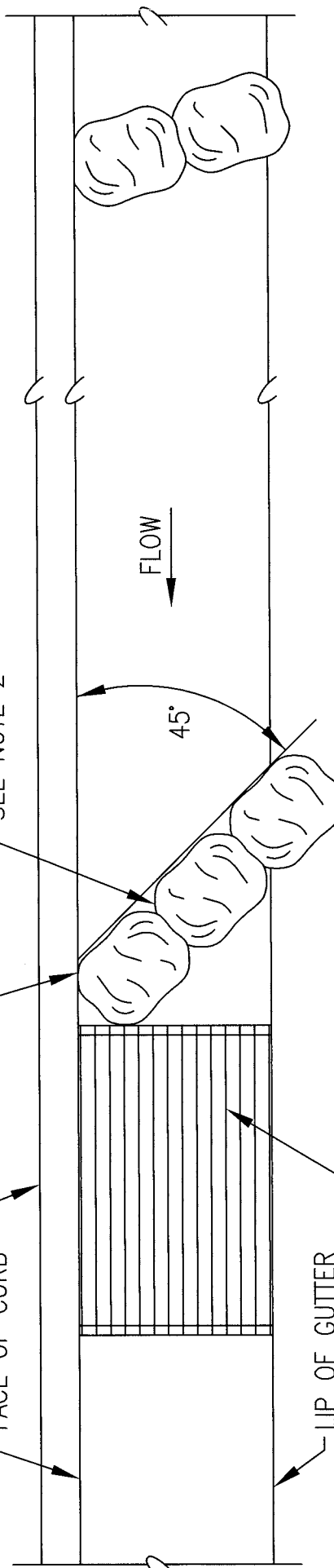
LIP OF GUTTER

DRAINAGE INLET WITH FILTER BAG OR INLET FILTER

SEE NOTE 2

FLOW

45°

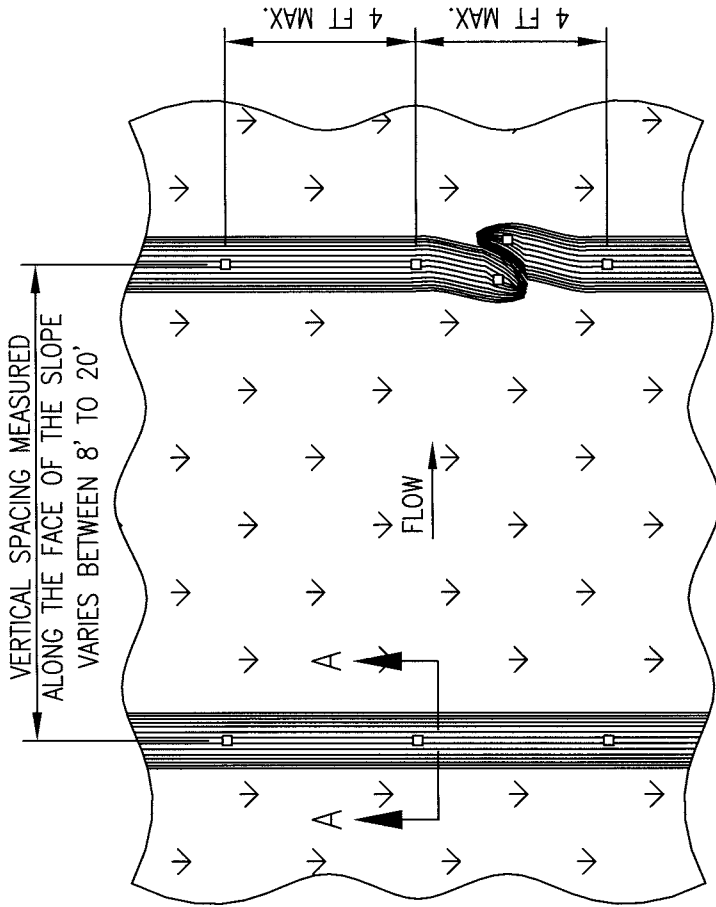


PLAN VIEW

NOTES:

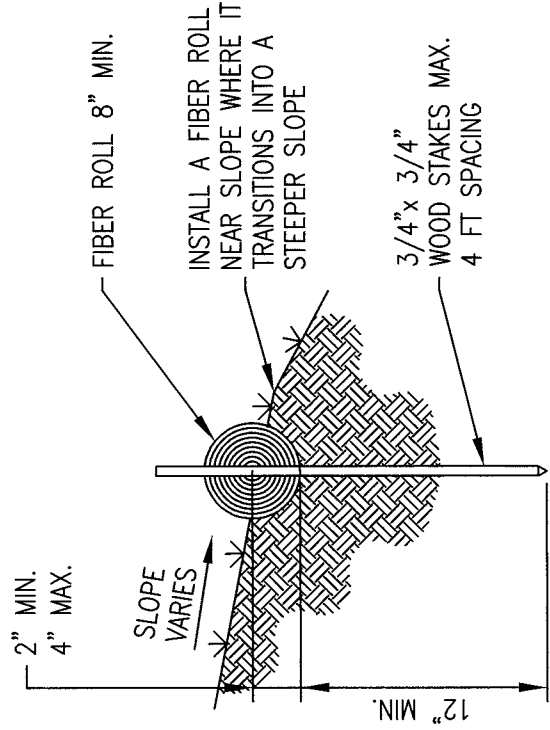
1. SEDIMENT TRAPPED UPSTREAM OF SEDIMENT CONTROL BMPs SHALL BE REMOVED WEEKLY, PRIOR TO AND AFTER A RAINFALL EVENT.
2. PLACE BMPs TIGHTLY TOGETHER AT JOINTS TO PREVENT OR MINIMIZE SEEPAGE AT JOINTS.
3. REPAIR WASHOUTS AND OTHER DAMAGE AS NEEDED.
4. REMOVE BARRIER WHEN NO LONGER NEEDED.

COUNTY OF YOLO PLANNING AND PUBLIC WORKS DEPARTMENT	DATE: 08/05/08
INLET SEDIMENT CONTROL	SHEET # 3 OF 3
<i>James Kallas</i> COUNTY ENGINEER No. C42401	DRAWING #: 11--7 NOT TO SCALE
<i>28 AUG-08</i> APPROVAL DATE	

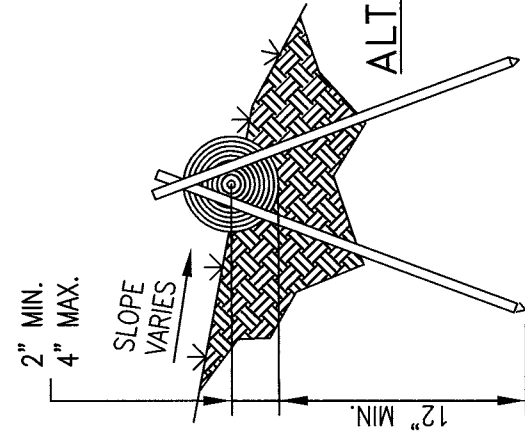


TYPICAL FIBER ROLL INSTALLATION

- NOTES:**
1. INSTALL FIBER ROLLS IN A ROW ALONG A LEVEL CONTOUR.
 2. AT ENDS OF A ROW TURN THE LAST TWO FEET UP SLOPE SLIGHTLY.
 3. FIBER ROLLS SHALL BE OVERLAPPED TIGHTLY AND STAKED AT THE JOINTS.
 4. FIBER ROLLS WORK BEST IN CONJUNCTION WITH GOOD EROSION CONTROL BMPs.
 5. INSPECT FIBER ROLLS WEEKLY, BEFORE AND AFTER A RAINFALL EVENT. REPAIR AND REPLACE AS NEEDED.

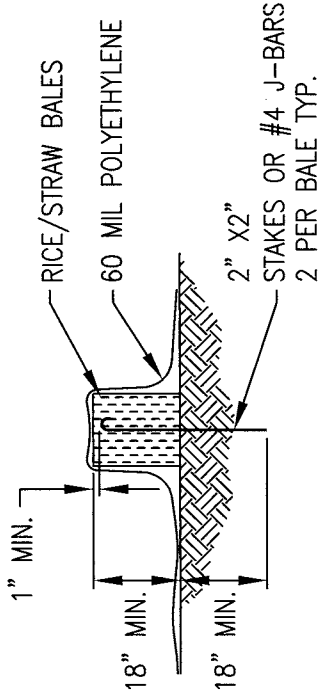
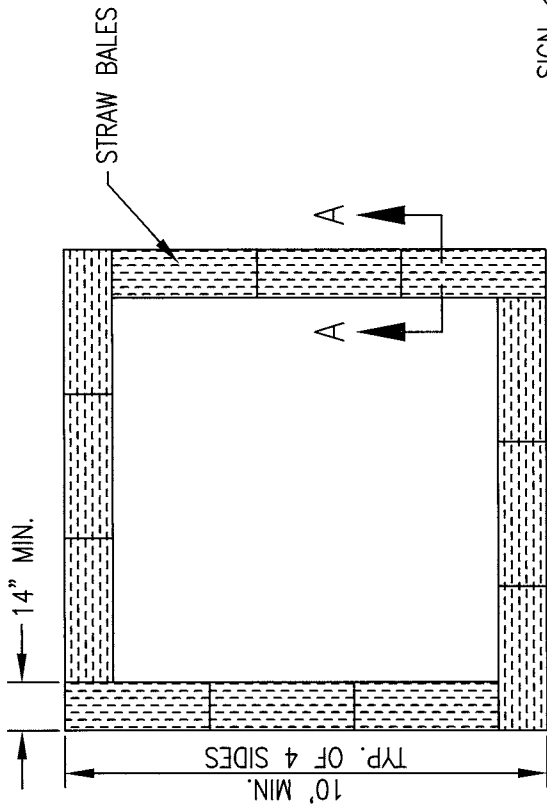


SECTION A - A

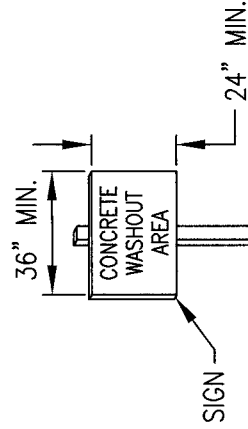


ALTERNATE STAKING DETAIL

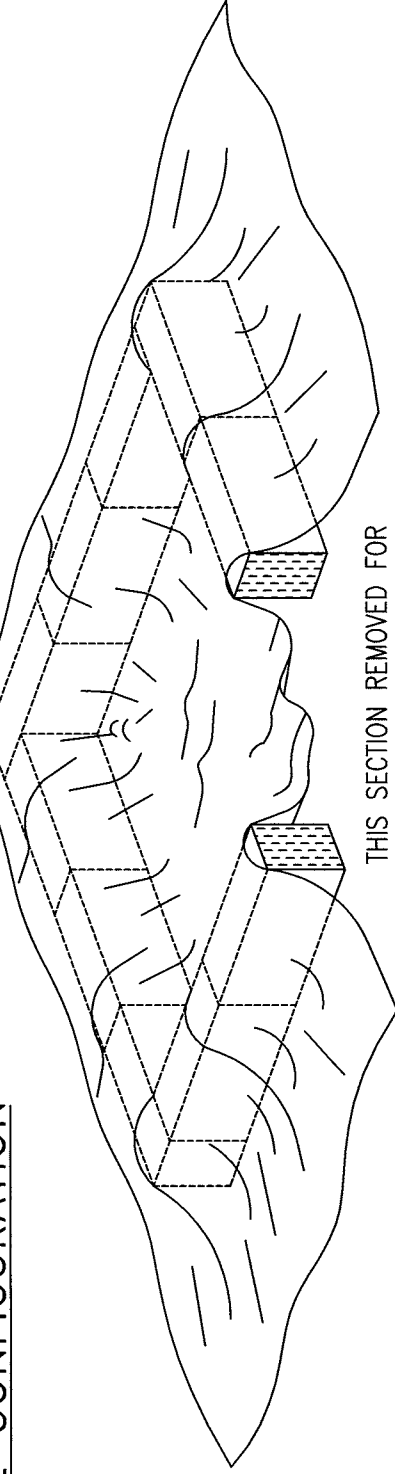
COUNTY OF YOLO PLANNING AND PUBLIC WORKS DEPARTMENT	DATE: 08/05/08
	SHEET # 1 OF 1
FIBER ROLLS	DRAWING #: 11-8
<i>Panos Kallias</i> COUNTY ENGINEER No. C42401	APPROVAL DATE 28 Aug. 08
NOT TO SCALE	



SECTION A - A



BALE CONFIGURATION

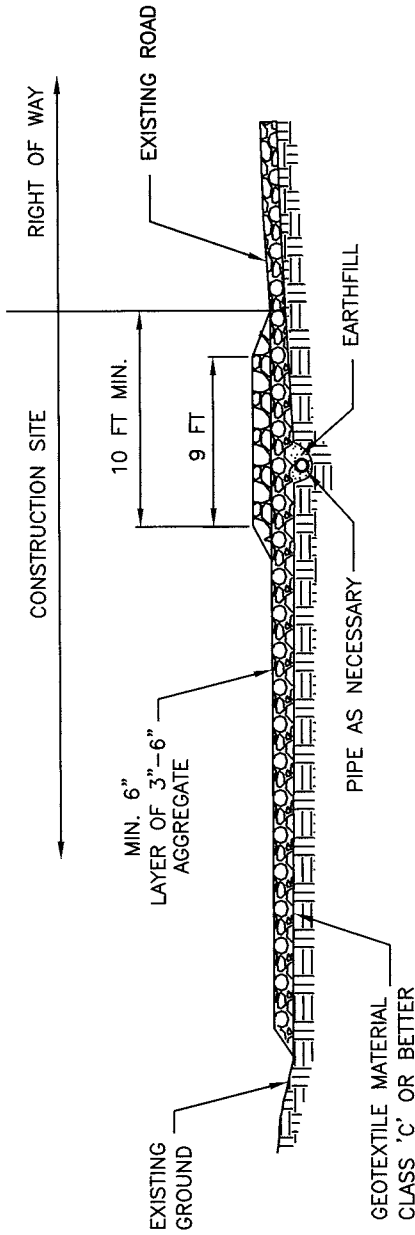


THIS SECTION REMOVED FOR GRAPHICAL REPRESENTATION ONLY. STRAW BALE PERIMETER SHALL BE CONTINUOUS.

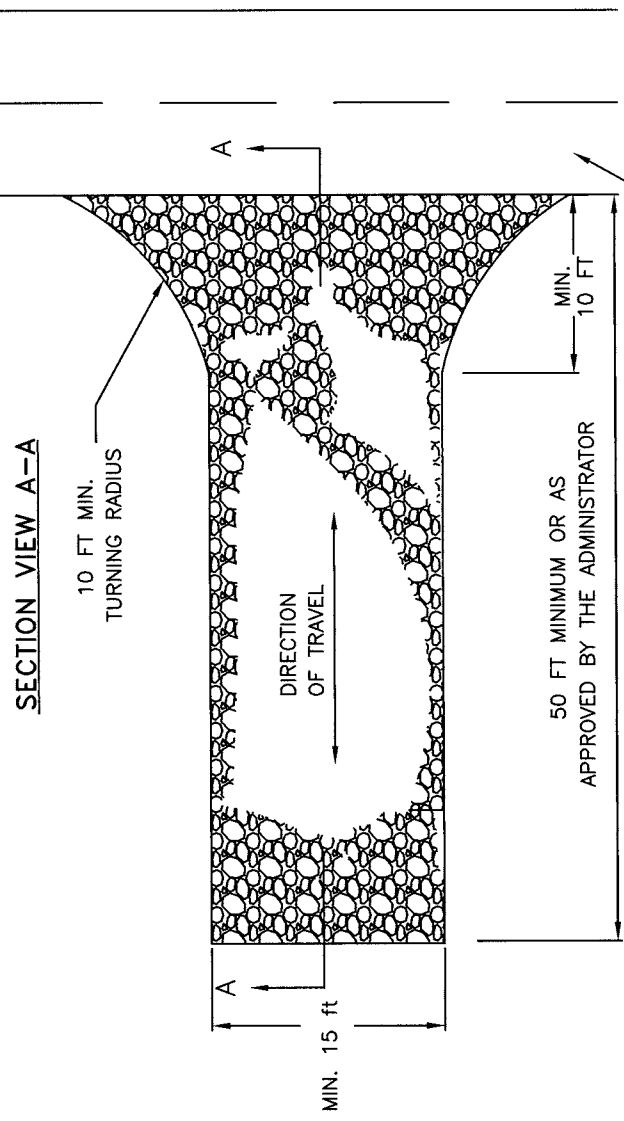
NOTES:

1. FACE SIGN TOWARD NEAREST STREET OR ACCESS POINT.
2. CONCRETE WASHOUT SHALL BE LOCATED BEHIND THE CURB AND 50 FEET MINIMUM FROM DRAINAGE INLETS OR WATERCOURSES.
3. CONCRETE WASHOUT SHALL BE INSPECTED AND MAINTAINED TO PREVENT LEAKS OR OVERFLOWS.
4. WASHOUT MUST BE CLEANED, OR NEW ONE BUILT ONCE IT REACHES 75% CAPACITY.

COUNTY OF YOLO PLANNING AND PUBLIC WORKS DEPARTMENT	DATE: 08/05/08
CONCRETE WASHOUT	SHEET # 1 OF 1
<i>Pamela Rolles</i> COUNTY ENGINEER No. C42401	DRAWING #: 11-9 NOT TO SCALE
APPROVAL DATE 28 AUG. 08	



CONSTRUCTION ENTRANCE/EXIT



CONSTRUCTION ENTRANCE/EXIT

PLAN VIEW

NOTES:

1. STABILIZED CONSTRUCTION SITE ACCESS SHALL BE CONSTRUCTED OF 3 TO 6 INCH WASHED, WELL GRADED GRAVEL OR CRUSHED ROCK. MATERIAL SHALL BE PLACED TO A MINIMUM THICKNESS OF 6 INCHES.
2. LENGTH OF ENTRANCE SHALL BE A MINIMUM OF 50 FEET. WIDTH SHALL BE A MINIMUM OF 15 FEET OR GREATER IF NECESSARY TO COVER ALL VEHICULAR INGRESS AND EGRESS. PROVIDE AMPLE TURNING RADII.
3. THE ENTRANCE SHALL BE KEPT IN GOOD CONDITION BY OCCASIONAL TOP DRESSING WITH MATERIAL AS SPECIFIED IN NOTE 1.
4. ACCESSES SHALL BE INSPECTED WEEKLY DURING PERIODS OF HEAVY USAGE, MONTHLY DURING NORMAL USAGE, AND AFTER EACH RAINFALL, WITH MAINTENANCE PROVIDED AS NECESSARY. PERIODIC TOP DRESSING SHALL BE DONE AS NEEDED.

COUNTY OF YOLO PLANNING AND PUBLIC WORKS DEPARTMENT	DATE: 08/05/08
STABILIZED CONSTRUCTION SITE ACCESS	SHEET # 1 OF 1
<i>Paros Kollas</i> COUNTY ENGINEER No. C42401	DRAWING #: 11-1 NOT TO SCALE
APPROVAL DATE <i>28 AUG. 08</i>	